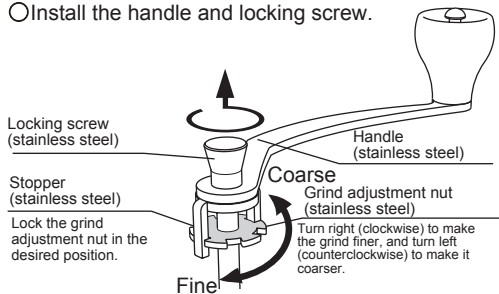


CERAMIC COFFEE GRINDER

Adjusting the Coffee Grind

- Turn the locking screw counterclockwise and remove it.
- Remove the handle and stopper.
- Turn the grind adjustment nut to the desired grind level.
(Refer to the figure below for the direction of grind adjustment.)
- Lock the grind adjustment nut with the stopper.
- Install the handle and locking screw.



Handling Precautions

- ◆ Never freely spin the handle or turn it in reverse, because doing so will damage the mill.
- ◆ If you turn the grind adjustment nut too far to the right, the turning will become heavier and may cause a malfunction.
- ◆ Coffee oil adheres to the mill. Immerse the mill in a weak, neutral detergent, and then thoroughly rinse it. After washing the mill, let it dry completely. (Caution: Do not use household bleach.)
- ◆ Do not use oil for cleaning.
- ◆ With long-term use, the mill may wear and become blunter.
When the amount of beans that can be ground drops significantly, it is time to replace the product.
- ◆ If small split beans or other objects get into the level difference inside the unit (hopper) or the gaps, the coffee beans may not fall down smoothly and the handle may freely spin. When grinding the coffee beans, occasionally tap the unit lightly.
- ◆ Do not put your fingers inside the mill when turning the handle, because doing so is dangerous.
- ◆ Do not use for anything other than coffee beans, because doing so may break the mill.
- ◆ When using on a wooden table, use the anti-slip cover to make sure that the glass ball does not damage the table.

⚠ Do not expose to direct flames.

⚠ The glass is fragile. Handle carefully when washing it and during use.

⚠ Do not let children use this product. Do not use next to a child and keep out of reach of children.

- Do not use items with cracks, chips or deep scratches, because they could break unexpectedly.
- Do not strongly strike or scrape the inner surface of the glass container with a metal spoon or other object. Doing so may break the container.
- If the product breaks, take care not to injure yourself when cleaning it up.
- For disposal, follow the instructions of your local government.

Cleaning the Glass

⚠ When cleaning, use a neutral detergent on a soft sponge.

⚠ Even when using a soft sponge, do not use the sponges or cleansers shown below that will damage the glass.

Doing so may cause the glass to break unexpectedly.

- This product may be put in a dishwasher. Before using the dishwasher, read its instruction manual carefully.
- If the glass is very dirty, use diluted household bleach.
At this time, be sure to observe the handling precautions of your household bleach. After using the bleach, thoroughly wash it off.

